



# Pacific Engineering & Suppliers

Phone: +8801711874937  
+8801326721723

Email: [contact@pesbd.com](mailto:contact@pesbd.com)  
[mtrh.bd@gmail.com](mailto:mtrh.bd@gmail.com)

Website: [www.pesbd.com](http://www.pesbd.com)

# About Us

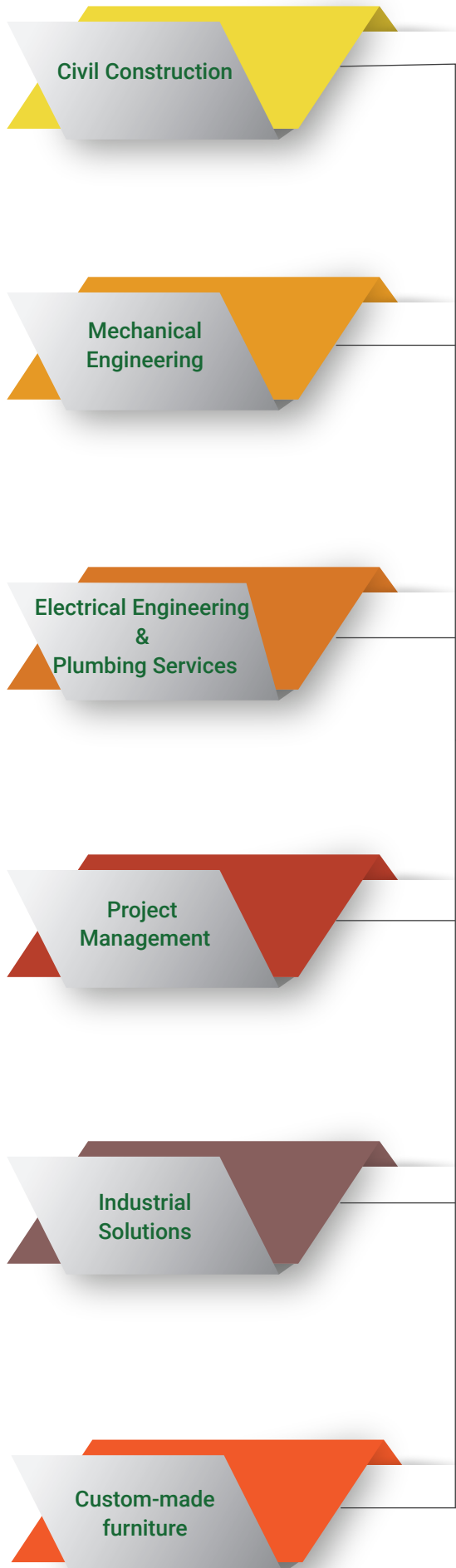
At Pacific Engineering & Suppliers, we are dedicated to delivering innovative and high-quality solutions in Bangladesh's engineering and construction industry. We work across the civil, mechanical, electrical and industrial sectors, specializing in residential, commercial, industrial and governmental projects. Our services include **civil construction, mechanical engineering, project management and industrial solutions.**

Our approach is client-centric, ensuring that each project is tailored to meet the unique needs of our clients. With a team of skilled engineers, architects and project managers, we focus on delivering cost-effective, efficient and long-lasting results. We emphasize excellence, sustainability, safety and quality in every project.

Beyond construction services, we offer a wide array of specialized solutions, including **steel structures, HVAC solutions, renewable solar energy systems, industrial engineering, advanced lighting systems, glazing services and acoustic-interior-exterior design.** We also provide **custom-made furniture** to create sustainable and high-performance environments. Additionally, we supply **premium industrial tools and materials** to ensure projects run seamlessly.

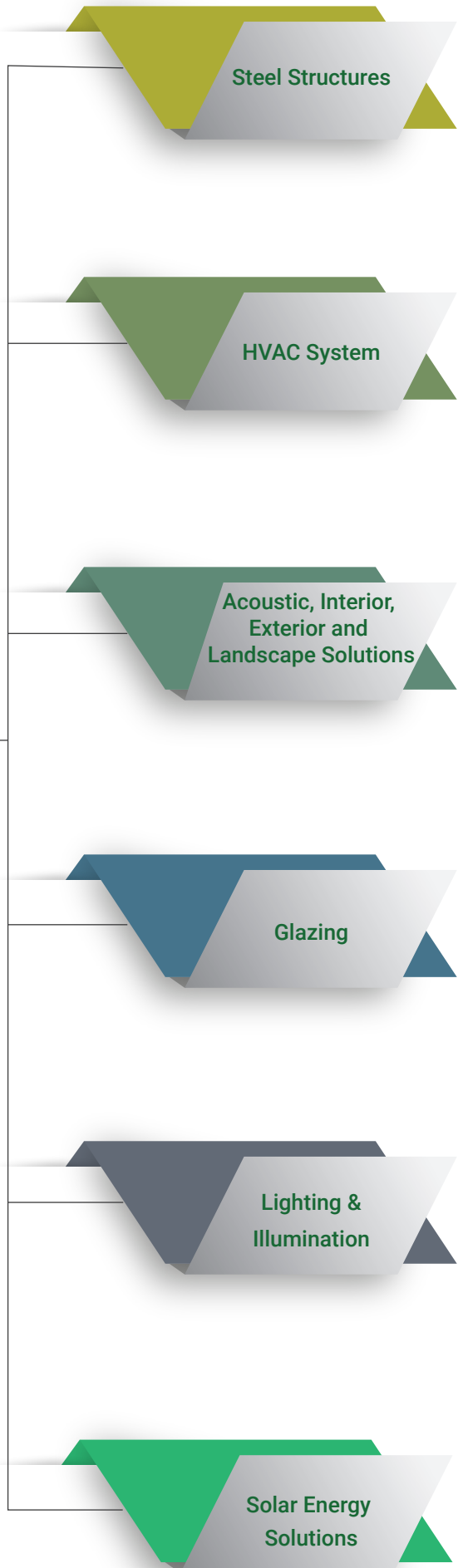
At Pacific Engineering & Suppliers, we are driven by a vision to transform ideas into reality, creating infrastructure that fosters growth, supports industries and enhances communities. Through innovation, collaboration and a commitment to continuous improvement, we aim to be the trusted partner for projects that shape the future of Bangladesh.





A light gray circle with a subtle gradient and a drop shadow, containing the word "Services" in green text.

**Services**



# Table of CONTENT

01.	Civil Construction	05
02.	Mechanical Engineering	05
03.	Electrical Engineering & Plumbing Services	06
04.	Project Management	06
05.	Steel Structures	07
06.	HVAC System	11
07.	Acoustic, Interior, Exterior and Landscape Solutions	17
08.	Supply of Engineering Goods	23
09.	Industrial Solutions	24
10.	Glazing	34
11.	Lighting & Illumination	37
12.	Solar Energy Solutions	43
13.	Custom-made furniture	46
14.	Some of the Recently Completed Government Projects	53
15.	Some of the ongoing government works	58



## Civil Construction

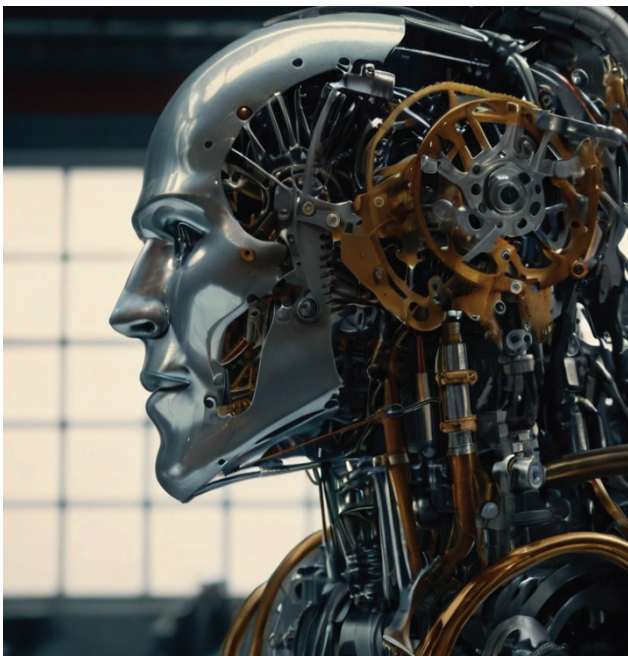
Solid. Secured. Sustainable

01

Our civil construction services are designed to cater to a wide range of needs, from high-rise buildings to complex infrastructure projects. We undertake projects of all scales, ensuring that they are executed with top-tier quality and professionalism. Whether it's a commercial, residential or industrial building, our comprehensive services include:

- ✓ Architectural and structural design
- ✓ Large-scale infrastructure development (roads, bridges and public utilities)
- ✓ Multi-story buildings for residential, commercial and governmental use
- ✓ Custom-built solutions for high-end properties

**We pride ourselves on meticulous attention to detail, from the ground-breaking phase to the final touches, ensuring that every structure is built to last.**



## Mechanical Engineering

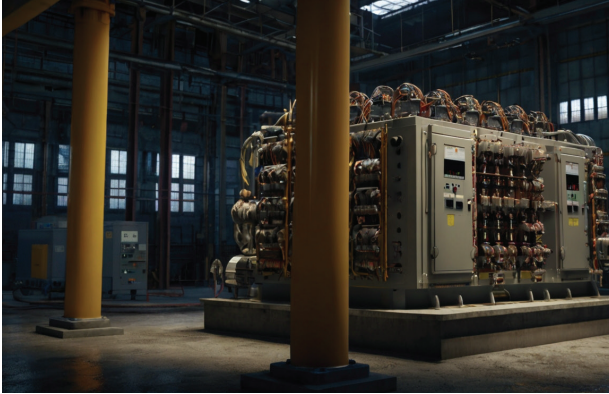
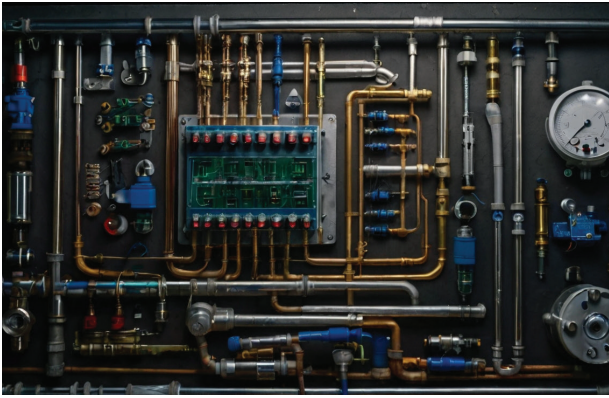
Motion. Mastery. Mechanics

02

We provide sophisticated mechanical engineering services, offering innovative solutions for industrial machinery and plant operations. Our mechanical team is adept at the installation, maintenance and fabrication of equipment, providing:

- ✓ Custom fabrication of industrial equipment
- ✓ Installation of complex machinery in factories
- ✓ Scheduled maintenance services
- ✓ Precision welding and metalwork
- ✓ Optimization of industrial processes to ensure efficiency

**Our mechanical solutions ensure that your facility operates seamlessly, with minimized downtime and maximized productivity.**



## Electrical Engineering & Plumbing Services

03

### Wired Right. Piped Tight

Our expertise in electrical and plumbing services ensures the smooth functioning of all mechanical systems in buildings. Whether it's a new project or the refurbishment of an existing one, we guarantee reliable and efficient systems. Our services include:

- ✔ Complete electrical system installation and maintenance
- ✔ Power distribution and sub-station setup
- ✔ Energy-efficient lighting solutions for industrial, commercial and residential projects
- ✔ Comprehensive plumbing installations, from water supply systems to waste management
- ✔ Smart building solutions that integrate energy management and automation

We take a client-first approach to tailor systems that match your needs and enhance building functionality.



## Project Management

04

### Organize. Optimize. Achieve

We offer world-class project management services, handling every aspect of your project from start to finish. Our dedicated project managers ensure that all phases of construction are meticulously planned and executed. We specialize in:

- ✔ Detailed project planning, budgeting and scheduling
- ✔ Coordination with contractors, architects and engineers
- ✔ Risk management and quality control
- ✔ Timely completion of projects without compromising on quality
- ✔ Regular progress reporting to clients

With our seamless project management, you can rest assured that your project will be delivered on time and to the highest standards.



# Explore Our Comprehensive Service Offerings

---

## Steel Structures

Stalwart. Steel. Sophistication

05

At Pacific Engineering & Suppliers, we specialize in the design and construction of durable and innovative steel structures, catering to a wide range of industries and applications. Our steel solutions are built to meet the highest standards of quality, efficiency and sustainability. The diverse range of projects we handle includes:



- Warehouses
- Aircraft Hangars
- Cold Storages
- Distribution Centers
- Exhibition Halls
- Factory Buildings
- Field Hospitals
- Power Plants
- Racking Systems
- Refineries

# SCOPES of Steel Structure



- Steel Mills
- Shopping Centers
- Workshops
- Showrooms
- Office and Residential Buildings
- Prefabricated Building Steel Structures
- Sport Stadiums
- Steel Truss Bridges
- Modular Home
- Terminals, Stations and Ports



# Why Steel Structures?

Steel structures offer unmatched versatility, durability and sustainability, making them the material of choice for modern construction. Here are the key reasons why steel is the preferred choice for building your next project:

- **Portability & Mobility**

Steel structures stand out for their inherent portability. The ease with which they can be relocated or reconfigured makes them ideal for applications that require flexibility. Whether you're building temporary shelters or mobile facilities, steel structures provide the mobility and adaptability to meet dynamic needs.

- **Strength-to-Weight Ratio**

Steel offers an exceptional strength-to-weight ratio. Compared to concrete, steel is much lighter, which translates into lighter foundations and reduced overall structural weight. This reduction in weight leads to significant cost savings in material and transportation, optimizing both your budget and your project timeline.

- **Speed of Construction**

One of the key advantages of steel structures is the speed at which they can be constructed. Steel components can be prefabricated off-site and then rapidly assembled on-site. This leads to faster project completion, enabling you to meet tight deadlines without compromising on quality.

- **Flexibility in Design**

Steel's strength allows for greater flexibility in design, enabling architects and designers to create more complex and aesthetically pleasing structures. From open, column-free spaces to intricate custom designs, steel offers the freedom to build innovative and striking architectural features.

- **Durability & Resilience**

Steel structures are built to last. Resistant to corrosion, fire and pests, steel outperforms many other building materials over time. This durability ensures that your structure remains in prime condition for years, minimizing the need for costly repairs and maintenance.

- **Sustainability**

Steel is one of the most recycled materials in the world, making it an eco-friendly choice for sustainable construction. The ability to easily disassemble and recycle steel at the end of its life further reduces waste, contributing to a more sustainable future. Steel's recyclability makes it a long-term solution that aligns with global sustainability goals.

- **Cost-Effectiveness**

While the initial construction costs of steel structures might be higher than those of reinforced concrete, the long-term savings are substantial. Reduced maintenance costs, faster construction times and the potential for reuse or recycling of materials all contribute to lower overall lifecycle costs.

- **Construction Site Benefits**

Steel structures are less resource-intensive and require less space during construction than their concrete counterparts. This results in minimized disruption to the surrounding environment and reduced construction-related impacts, making steel an ideal choice for urban or sensitive sites.

- **Innovative Solutions**

Steel structures are highly adaptable to advanced construction methods such as Building Information Modeling (BIM) and modular construction. These technologies enable greater precision and efficiency in both design and project delivery, ensuring that your steel structure is built to the highest standards.

- **Versatility**

Steel can be adapted to various sizes, shapes and configurations, making it suitable for a wide range of applications. Whether you need a temporary shelter, a mobile facility or a large-scale permanent building, steel structures offer unmatched flexibility to meet diverse construction requirements.

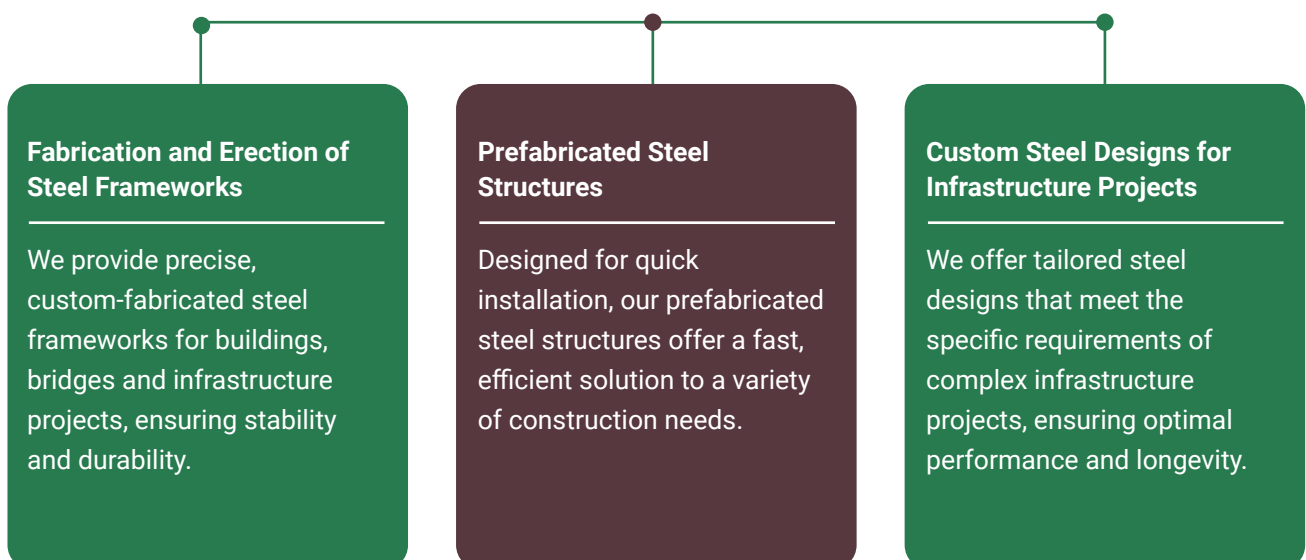
- **Reuse and Recycling**

Steel is renowned for its longevity and can be reused multiple times without losing structural integrity. This makes it an invaluable resource for sustainable construction. As one of the most recycled materials globally, steel structures help reduce environmental impact, supporting a circular economy.

## Our Steel Solutions

---

At Pacific Engineering & Suppliers, we are experts in the design, fabrication and erection of steel structures, offering a range of specialized services for industrial, commercial and residential applications. Our steel solutions include:

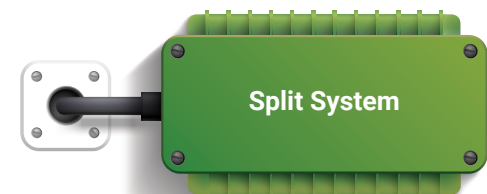
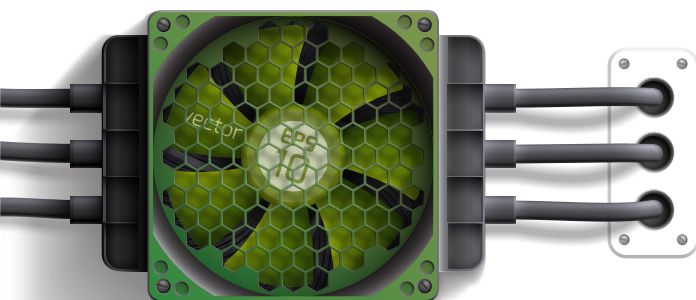
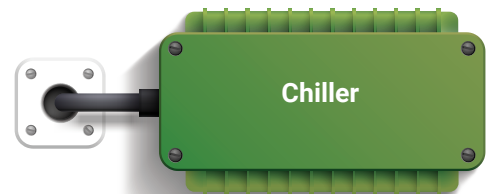
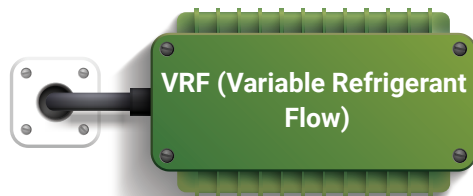




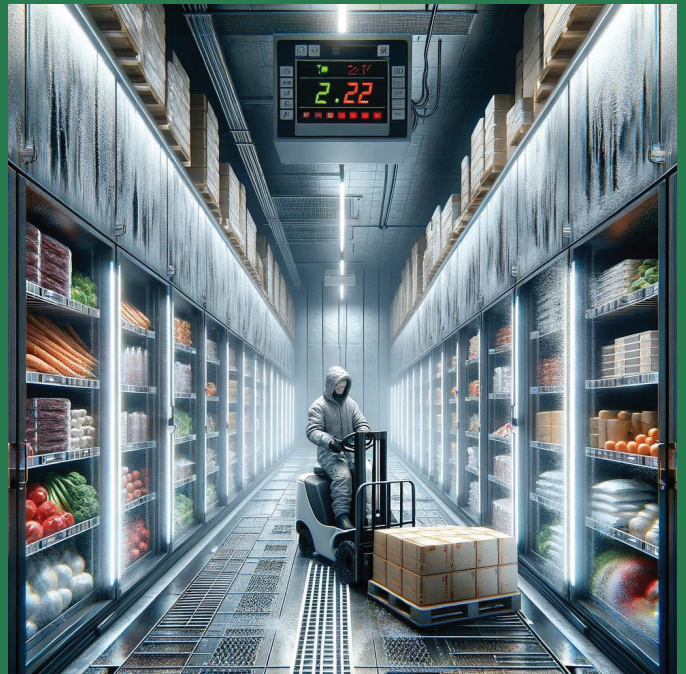
At Pacific Engineering & Suppliers, we take pride in being a premier provider of advanced HVAC solutions tailored to meet the diverse needs of residential, commercial and industrial clients. With a commitment to quality, innovation and customer satisfaction, we specialize in delivering cutting-edge heating, ventilation and air conditioning (HVAC) systems, ensuring optimum comfort and energy efficiency for every application.



## Our HVAC System Types



# Cold Storage Systems: A Critical Component of Modern Supply Chains



## Types of Cold Storage Systems

- 01 Walk-in Cold Rooms**  
Customizable and ideal for smaller businesses.
- 02 Cold Storage Warehouses**  
Large-scale facilities for distribution centers, offering multi-temperature zones.
- 03 Refrigerated Containers**  
Mobile cold storage for transporting perishable goods.
- 04 Blast Freezers**  
Quick-freezing solutions for preserving food quality.

## Applications

These systems play a crucial role in sectors such as

**Food Industry**  
Preserving fruits, vegetables, meats and dairy products.



**Pharmaceuticals**  
Storing vaccines and medicines.



**Logistics and Distribution**  
Central hubs for storing and distributing perishable goods.

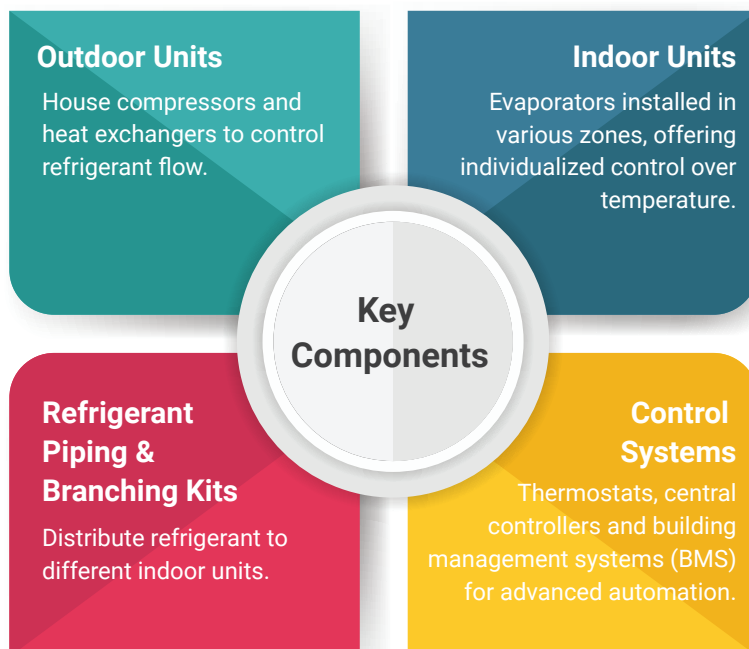


## Design Considerations

- 01 Energy Efficiency**  
Using high-efficiency components to reduce operational costs.
- 02 Regulatory Compliance**  
Ensuring that systems adhere to industry standards for safety and quality.
- 02 Backup Systems**  
Redundant systems to ensure continuous operation in case of failures.

# VRF Systems: Energy-Efficient HVAC for Modern Buildings

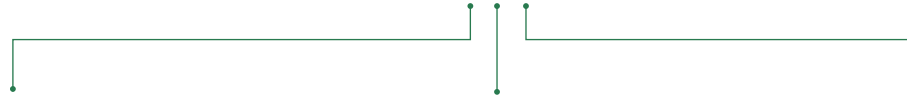
A VRF (Variable Refrigerant Flow) system is a flexible HVAC solution that efficiently manages heating and cooling across multiple zones. Using refrigerant as a medium, VRF systems can control the amount of refrigerant flowing to each indoor unit, making it possible to adjust temperatures precisely.



## Features and Benefits

- 01 Zoning Capability**  
Provides independent control of temperature in different areas.
- 02 Energy Efficiency**  
Inverter technology adjusts compressor speed to match demand, reducing energy use.
- 03 Scalability**  
VRF systems can be expanded as building requirements grow.
- 04 Comfort**  
Precision temperature control ensures a stable and comfortable indoor environment.
- 05 Environmental Impact**  
Eco-friendly refrigerants contribute to a reduced carbon footprint.

## Applications



### Commercial Buildings

Offices, hotels, retail spaces.



### Residential Buildings

Multi-family homes and luxury residences.

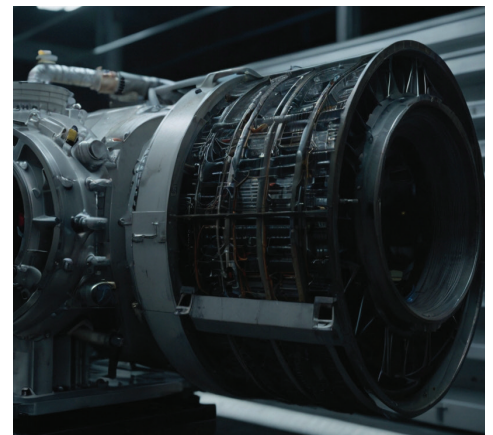


### Healthcare Facilities

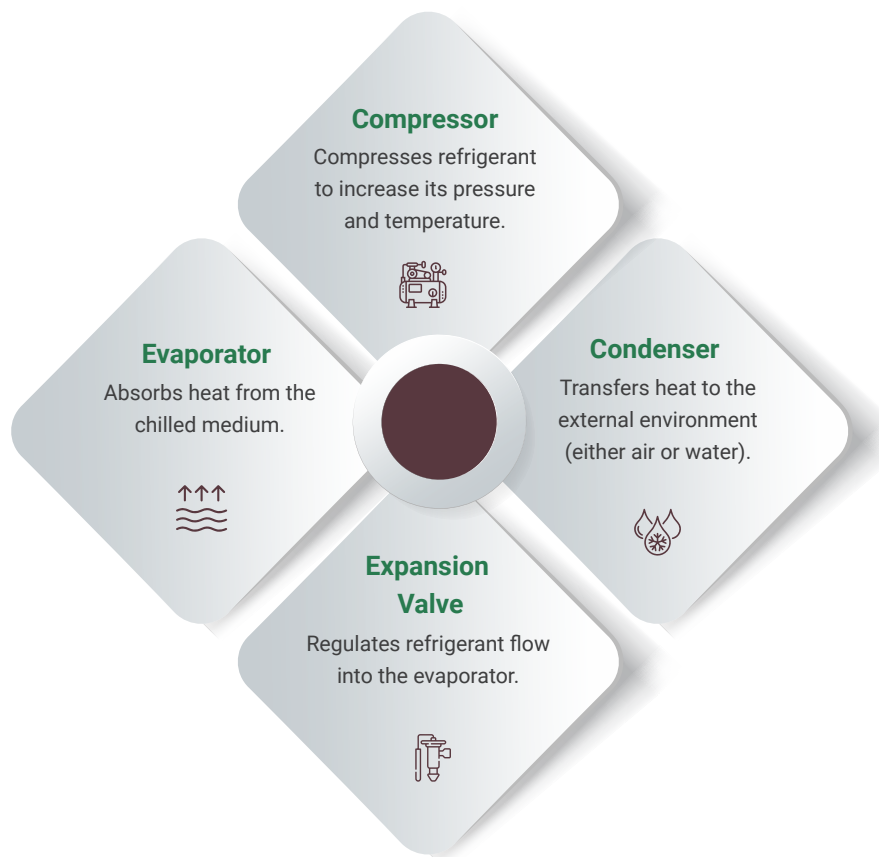
Hospitals and clinics where precise temperature control is essential.

## Chiller Systems: Essential for Large-Scale Cooling Needs

Chiller systems are crucial in large commercial and industrial applications, effectively removing heat through a refrigeration cycle. They are used to cool air, water and equipment across various industries.



## Key Components





## Types of Chillers

### 01 Air-Cooled Chillers

Suitable for smaller installations and easier to maintain.

### 02 Water-Cooled Chillers

More efficient for large-scale applications.

### 03 Absorption Chillers

Use heat (like steam) instead of mechanical energy for cooling, making them ideal for energy-efficient facilities.

## Applications

### Data Centers

Keeping servers cool.

### Healthcare

Maintaining critical temperature conditions in medical and pharmaceutical settings.

### Recreational Facilities

Ice rinks and swimming pools.

# HVAC Systems for Specialized Applications

HVAC systems can be adapted for a variety of settings, including

### Industrial Facilities

Factories, warehouses and distribution centers.

### Healthcare Facilities

Hospitals, clinics and laboratories that require precise climate control.

### Data Centers

Cooling sensitive IT infrastructure to prevent overheating.



### Residential Buildings

Single-family homes, apartments and townhouses.

### Commercial Buildings

Offices, shopping malls, restaurants and hotels.

# Dehumidifiers: Ensuring Comfortable, Healthy Environments

Dehumidifiers are essential in reducing indoor humidity, improving air quality and preventing mold growth. There are three primary types:

## Refrigerant Dehumidifiers

Use condensation to remove moisture.

## Desiccant Dehumidifiers

Use moisture-absorbing materials, ideal for cooler environments.

## Thermo-electric Dehumidifiers

Small, efficient units suited for low humidity spaces.

## Benefits of Dehumidification

### 01 Health

Reduces allergens, dust mites and mold.

### 01 Comfort

Controls humidity, preventing sticky air conditions.

### 01 Energy Efficiency

Decreases the load on air conditioning systems.



## Acoustic, Interior, Exterior and Landscape Solutions

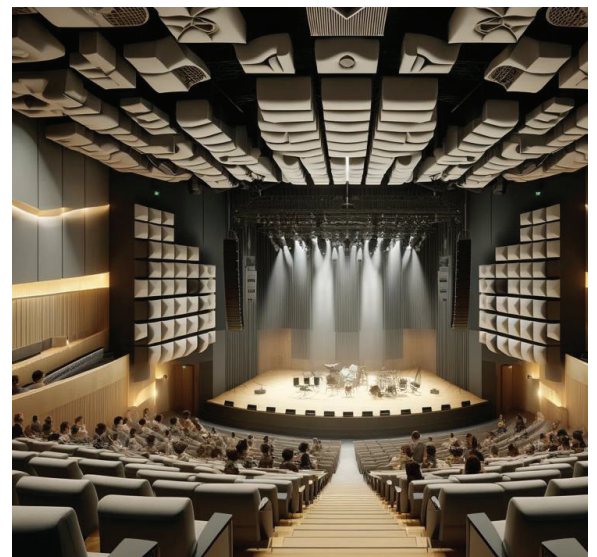
Exquisite. Echo-Free. Elegant

07

At **Pacific Engineering and Suppliers**, we are committed to enhancing environments through tailored solutions that optimize sound, aesthetics and functionality. With a focus on innovative design and sustainable practices, our comprehensive services in **Acoustic Design**, **Exterior and Landscaping** and **Interior Design** provide a seamless blend of creativity and technical expertise. Our team of professionals ensures that each project meets the unique needs of our clients, delivering results that are both visually stunning and functionally superior.

## Acoustic Design

An **acoustic system** is an integrated set of components and design elements used to control and optimize sound within any given space, such as auditoriums, theaters or recording studios. A well-designed acoustic system ensures clarity, balance and pleasant sound for all listeners. Sound plays a critical role in any space and our goal is to create environments where the auditory experience matches the visual appeal.



# Scopes of Acoustic System



Our **acoustic design services** ensure that every environment we work on provides the perfect auditory experience, whether for a concert hall, corporate office or residential space. We use advanced techniques and materials to manage sound, creating spaces that are as acoustically pleasing as they are visually stunning.

## Objectives of an Acoustic System

### 01 Clarity

Ensuring that speech, music and other sounds are clear and intelligible.

### 02 Balance

Achieving a harmonious blend of different sounds, ensuring no frequency overpowers another.

### 03 Even Distribution

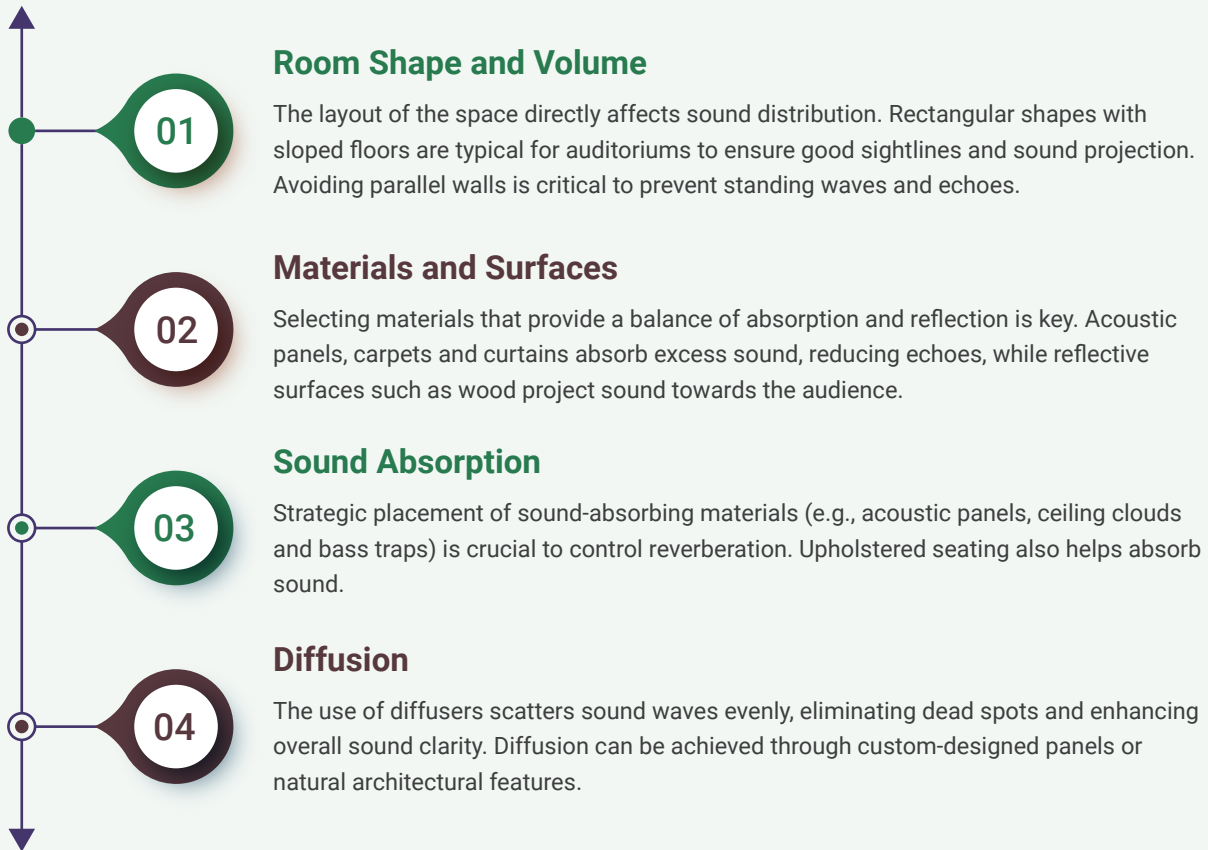
Ensuring consistent sound quality throughout the space, providing a uniform listening experience for all users.

### 04 Control of Reverberation

Managing the persistence of sound in the space to avoid excessive echoes and achieving a desired acoustic environment.



# Key Design Elements in Acoustic Systems



With **Pacific Engineering & Suppliers**, you can be assured of an optimal acoustic environment tailored to the specific needs of the space, whether it's a high-performance venue, a place of worship or a corporate office.

## Exterior and Landscaping

At **Pacific Engineering & Suppliers**, we believe that the exterior of a building is just as important as its interior. Our **exterior design and landscaping services** focus on creating visually striking and sustainable designs that blend architectural beauty with environmental harmony. We transform outdoor spaces into serene, functional areas that complement the overall aesthetic and ecological needs of the surrounding environment.



# Specialized Landscape Design

**Public Parks and Recreation Design**

Creating inviting public spaces, such as parks and playgrounds, that encourage community interaction and recreation.

**Sustainable Landscaping**

Creating inviting public spaces, such as parks and playgrounds, that encourage community interaction and recreation.

**Ecosystem Restoration and Wetland Preservation**

Focusing on restoring natural habitats and preserving wetlands to maintain biodiversity and improve water quality.

**Reforestation and Conservation**

Overseeing the replanting of forested areas and the preservation of scenic and ecologically significant landscapes.

ideas and solutions

# Key Features of Our Exterior and Landscaping Services

01

## Sustainable Materials

Choosing environmentally friendly materials and techniques that minimize the ecological footprint of your project.

02

## Climate Adaptation

Designing spaces that are resilient to local climate conditions, ensuring long-term durability and functionality.

03

## Green Infrastructure

Creating solutions that integrate nature into urban environments, such as green roofs and walls, to reduce the urban heat island effect and promote biodiversity.

Whether you need a serene garden, an inviting public park or a sustainable façade improvement, **Pacific Engineering & Suppliers** is dedicated to delivering the highest standard of quality in all aspects of exterior design and landscaping.



## Interior Design

Our interior design consultancy aims to create spaces that are not only aesthetically pleasing but also functional and aligned with the needs and preferences of our clients. We work with homeowners, businesses and institutions to transform their interiors into environments that reflect their personality and cater to their specific functional needs.

# Scope of Interior Design Services



# Interior Design Process



# Custom Solutions

- **Bespoke Furniture and Fixtures**  
Designing unique furniture pieces tailored to the client's preferences and the specific needs of the space.
- **Sustainability and Accessibility**  
Incorporating eco-friendly materials and designing spaces that are accessible to all, including those with disabilities.





## Project Management and Execution

### Coordination with Contractors

Ensuring smooth communication and execution with all contractors and vendors involved in the project.

### Installation and Styling

Overseeing the installation of design elements and final styling touches, ensuring everything is executed to perfection.

### Post-Installation Services

Conducting walk-throughs with clients to gather feedback and make any necessary adjustments.

At **Pacific Engineering & Suppliers**, our design philosophy blends creativity with practicality. Our experts work collaboratively with architects, engineers and artisans to bring your vision to life, ensuring that each project is a true reflection of your personality and meets your functional needs.

## Supply of Engineering Goods

Precision. Quality. Reliability

08

Pacific Engineering & Suppliers is also a trusted source for high-quality engineering goods, ensuring that our clients receive only the best materials and equipment. We supply a wide array of construction and industrial products, including:

- Structural steel, concrete and Construction materials

- Industrial machinery and heavy-duty equipment

- Electrical components and tools

- Customized materials based on project specifications

**Our robust supply chain guarantees timely delivery of materials to keep your project on track.**

## Industrial Solutions

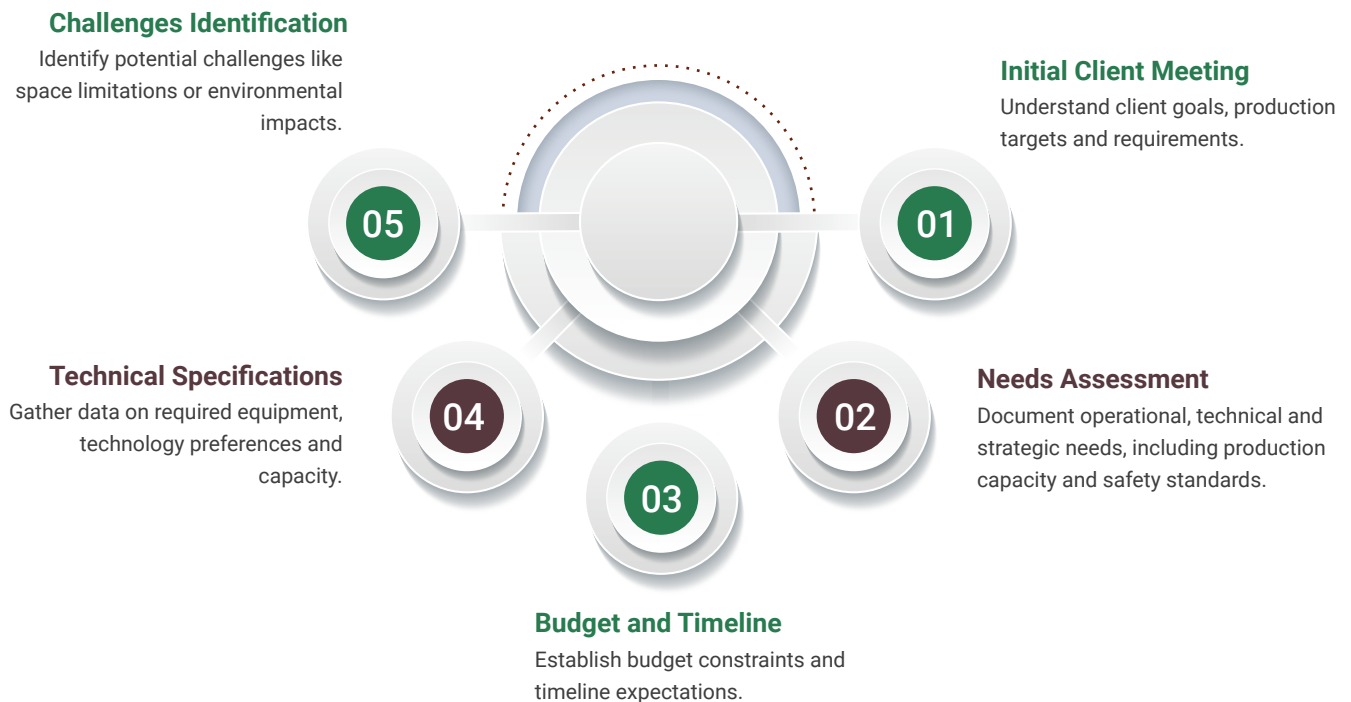
Innovate. Integrate. Industrialize

09

**Pacific Engineering and Suppliers** provides comprehensive industrial solutions, covering the entire project lifecycle, from concept development to installation, commissioning and ongoing maintenance. We ensure operational efficiency, safety and sustainability at every stage of the process. Below is a detailed breakdown of our approach:

# Project Initiation and Concept Development

## Client Consultation and Requirement Gathering



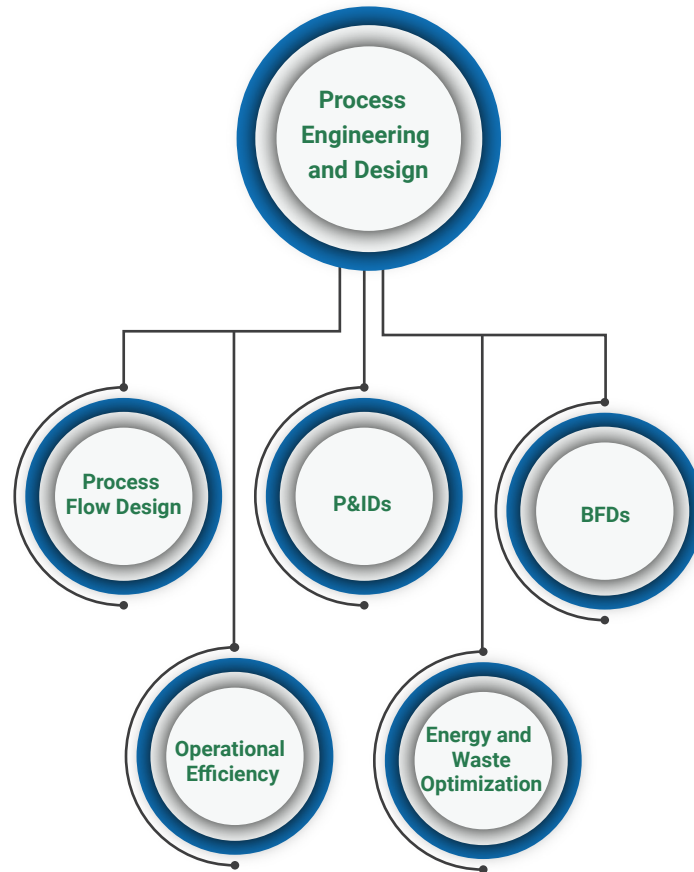
## Feasibility Study and Site Evaluation

- **Technical Feasibility**  
Assess practical implementation of the project considering machinery and infrastructure.
- **Economic Feasibility**  
Analyze cost-effectiveness by comparing project costs to potential ROI.
- **Site Inspection**  
Evaluate site conditions (land, utilities, etc.).
- **Risk Assessment**  
Identify potential site-related risks.

## Conceptual Design and Initial Proposal

- **Preliminary Design Concepts**  
Develop designs addressing project layout and production flow.
- **Operational Layouts**  
Create high-level operational flow diagrams.
- **Proposal Creation**  
Draft a proposal with budget estimates, project timelines and sustainability considerations.

# Detailed Design and Engineering



## Mechanical, Electrical and Civil Engineering

- **Mechanical Design**  
Specify pumps, motors, compressors and conveyors.
- **Electrical Design**  
Design electrical systems, including wiring and automation technologies.
- **Civil Engineering**  
Design structural elements for foundations, roads and auxiliary structures.





## 3D Modeling and Simulation

- **Virtual Modeling**  
Use advanced 3D modeling software for facility designs.
- **Client Visualization**  
Allow clients to interact with proposed designs.
- **Simulation and Testing**  
Run simulations to optimize the design.



## Regulatory Compliance and Safety Planning

- **Regulatory Review**  
Ensure compliance with local, national and international standards.
- **Safety Risk Analysis**  
Identify and mitigate operational hazards.
- **HSE Plan**  
Develop a comprehensive health, safety and environmental plan.

# Procurement and Vendor Management

## Vendor Selection and Procurement Planning

- **Vendor Identification**  
Shortlist reliable vendors.
- **Competitive Bidding**  
Conduct a bidding process to ensure quality and cost-effectiveness.
- **Delivery Scheduling**  
Plan delivery timelines for all components.
- **Vendor Contracting**  
Finalize contracts and warranties.

## Equipment Procurement and Custom Fabrication

- **Off-the-Shelf Equipment**  
Procure ready-made machinery when applicable.
- **Custom Fabrication**  
Design and fabricate custom machinery.
- **Quality Control**  
Ensure high standards for durability and performance.

## Logistics and Supply Chain Management

- **Shipping Coordination**  
Plan and coordinate transportation of materials.
- **Customs Management**  
Ensure timely clearance for international shipments.
- **Supply Chain Optimization**  
Monitor supply chains to prevent delays.

# Installation and Commissioning

## Site Preparation and Civil Works

**01**

### Site Clearing and Grading

Prepare the site through leveling and earthworks.

**02**

### Foundation Construction

Lay foundations for machinery.

**03**

### Utility Connections

Establish necessary utility connections (electricity, water etc.).

## Installation of Machinery and Equipment

**01**

### Mechanical Installation

Install components such as motors and conveyors.

**02**

### Electrical Installation

Wire control panels, sensors and electrical systems.

**03**

### Piping and Ducting Installation

Install piping and ducts for various systems.

## Control Systems and Automation Setup

**01**

### PLC Configuration

Install and configure control systems for automated operations.

**02**

### HMI

Set up interfaces for real-time monitoring.

## Calibration and Performance Testing

**01**

### Calibration

Calibrate instruments for operational accuracy.

**02**

### Testing

Conduct tests under operational conditions to verify functionality.

# Commissioning and Handover



## Pre-Commissioning and Commissioning

### 01 Dry Runs

Perform machinery dry runs before full operation.

### 02 Operational Testing

Test the system to ensure it meets design specifications.

### 03 Safety Testing

Conduct final safety tests to verify regulatory compliance.

## Documentation and Handover

### 01 Operation Manuals

Provide detailed operation and maintenance manuals.

### 02 Compliance Certification

Deliver certifications for regulatory compliance

### 03 Final Handover

Officially transfer the system to the client after successful testing.

## Operator Training and Safety Briefing

### 01 Operator Training

Provide in-depth training on system operation and troubleshooting.

### 02 Safety Protocols

Deliver safety briefings and emergency procedures.

### 03 Maintenance Training

Provide preventive maintenance guidance.



# Maintenance and After-Sales Support

## Preventive Maintenance Programs

### 01 Maintenance Schedule

Develop a tailored preventive maintenance schedule.

### 02 Regular Inspections

Conduct scheduled inspections for wear and tear.

### 03 Preventive Repairs

Address issues early to prevent major breakdowns.

## Predictive Maintenance and Condition Monitoring

### ● IoT Sensors

Implement real-time condition monitoring through IoT sensors.

### ● Data Analysis

Use data analysis for predictive maintenance and minimized downtime.

### ● Proactive Repairs

Schedule maintenance based on predictive insights.

## On-Site and Remote Support

### ● 24/7 Support

Provide continuous technical support and remote diagnostics.

### ● Field Service Teams

Dispatch teams for emergency repairs.

### ● Remote Monitoring

Troubleshoot remotely to avoid on-site delays.

# System Optimization and Continuous Improvement

## Operational Audits and Performance Reviews

- **Regular Audits**  
Conduct audits to identify inefficiencies.
- **Performance Reviews**  
Analyze production, energy usage and resource allocation.
- **Optimization Recommendations**  
Provide actionable recommendations for efficiency.

## Process and Technology Upgrades

- **Technological Advancements**  
Integrate the latest technologies for competitive advantage.
- **Retrofitting**  
Retrofit older systems for improved output and safety.
- **Sustainability Enhancements**  
Implement green technologies to enhance sustainability.

# Equipment Decommissioning and Replacement

## End-of-Life Equipment Replacement

- **Assessment**  
Identify equipment that has reached its end of life.
- **Decommissioning**  
Safely remove outdated equipment.
- **Seamless Replacement**  
Plan for new equipment installation without disrupting operations.

## Equipment Upgrades and Retrofitting

- **Energy-Efficient Retrofits**  
Integrate energy-efficient technologies.
- **Cost Reduction**  
Reduce operational costs by upgrading systems.
- **Environmental Compliance**  
Ensure compliance with updated environmental standards.

# Sustainability and Environmental Impact

## Energy Efficiency and Environmental Sustainability

- **Renewable Energy Integration**  
Implement renewable energy solutions (solar, wind, geothermal).
- **Energy Optimization**  
Optimize energy usage to reduce waste and improve efficiency.
- **Sustainable Resource Management**  
Minimize water usage, waste and emissions.

## Compliance with Environmental Regulations

- **Environmental Audits**  
Ensure processes meet environmental regulations.
- **Waste Management**  
Implement waste treatment and recycling solutions.
- **Sustainability Reporting**  
Provide detailed reports on environmental impact and sustainability standards.



**Pacific Engineering and Suppliers** delivers complete industrial project lifecycle services, managing every phase from concept to final handover and long-term support. Our commitment to quality and innovation ensures that we meet the highest standards while exceeding client expectations.

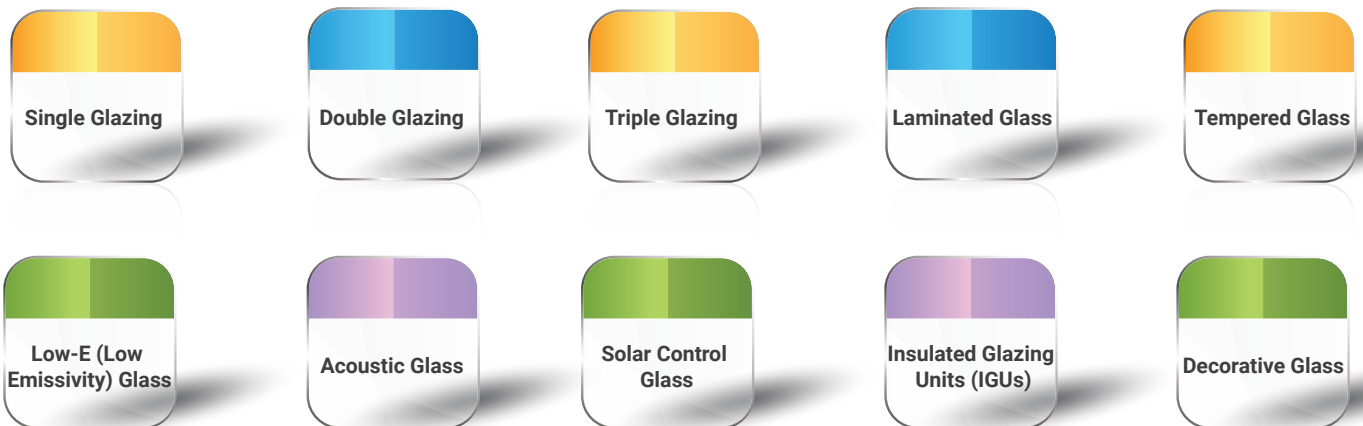
## Glazing

Glistening Glass Gateway

10

Glazing is an integral part of modern construction, playing a vital role in the installation of glass in windows, doors and walls. It allows natural light to penetrate the building, improving energy efficiency and aesthetics while providing insulation and protection from the elements. At Pacific Engineering & Suppliers, we specialize in delivering innovative glazing solutions designed to enhance the beauty, security and functionality of your spaces.

## Types of Glazing





## ● Laminated Glass

Sandwiches a plastic layer between glass panes for enhanced safety and security. Laminated glass remains intact even when broken.

## ● Tempered Glass

Heat-treated for strength, tempered glass breaks into blunt pieces rather than sharp shards, providing added safety.

## ● Low-E Glass

Coated with a thin metal layer to reduce heat transfer, low-E glass improves energy efficiency by reflecting heat back into the room while allowing natural light to pass through.

## ● Acoustic Glass

Designed to reduce noise, acoustic glazing includes multiple layers with a noise-dampening interlayer, ideal for buildings in noisy environments.

## ● Solar Control Glass

Coated to reflect a significant portion of solar radiation, solar control glass reduces the need for air conditioning, maintaining cooler indoor temperatures.

## ● Self-Cleaning Glass

Coated with a special material that uses sunlight and rain to break down dirt and grime, reducing maintenance efforts.

## ● Insulated Glazing Units (IGUs)

Often found in double or triple glazing systems, IGUs help prevent condensation and moisture buildup, improving insulation and comfort.

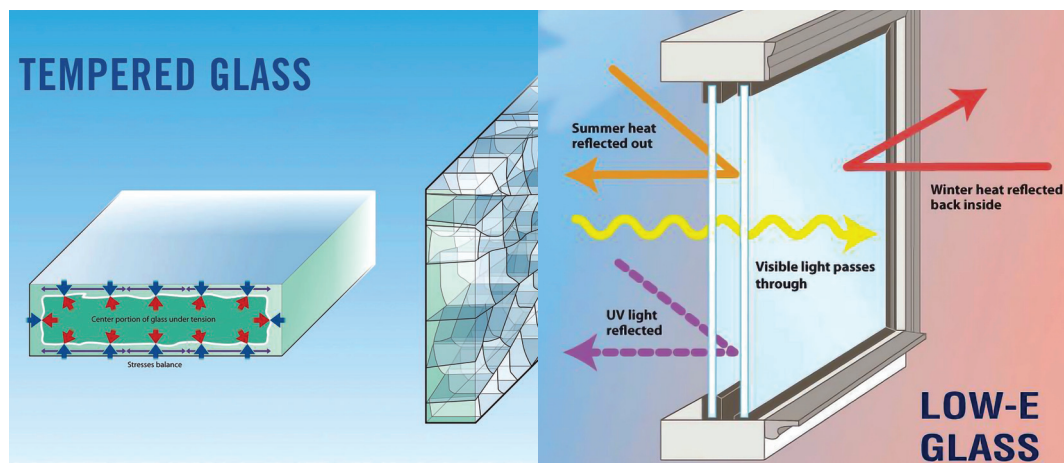
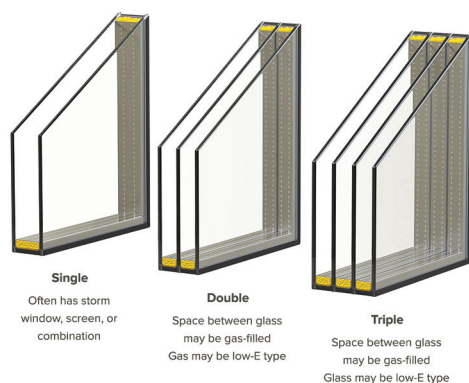
## ● Decorative Glass

Includes stained, frosted, and etched glass, which offer privacy and aesthetic enhancement for residential and commercial applications.

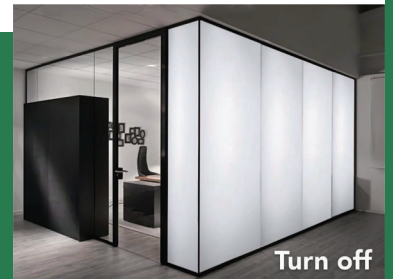
## ● Switchable and Dynamic Glass

Advanced glazing technologies that dynamically alter properties for energy efficiency, privacy and light control.

### Window Glazing Types



# Switchable and Dynamic Glass Technologies



Our dynamic glass options provide cutting-edge solutions for energy efficiency, occupant comfort and design flexibility. These include

- **Electrochromic Glass**  
Changes tint based on electrical voltage, offering energy savings, glare control and privacy.
- **Thermochromic Glass**  
Adjusts opacity based on temperature, automatically tinting to block excess heat.
- **Photochromic Glass**  
Reacts to UV light, darkening in the sun and returning to clear in the shade.
- **Suspended Particle Device (SPD) Glass**  
Offers instant privacy by switching from clear to dark with an electric current, also enhancing energy efficiency.
- **Polymer Dispersed Liquid Crystal (PDLC) Glass**  
Provides on-demand privacy with a simple switch, ideal for partitions and windows.

## Scopes and Benefits of Glazing

Our glazing solutions serve a variety of functions across different sectors, with benefits including:

### Energy Efficiency

Advanced glazing options help regulate indoor temperatures, reducing heating and cooling costs. Low-E and solar control glass contribute to energy savings by reflecting heat and blocking UV rays.

### Privacy and Security

Laminated, tempered, and dynamic glass options provide enhanced security by preventing breakage and offering instant privacy without sacrificing natural light.

### Acoustic Insulation

Acoustic glazing helps minimize noise pollution, making it ideal for buildings near highways or airports.

### Aesthetic and Design Flexibility

Decorative glazing options enhance both interior and exterior designs, while dynamic glass allows architects to create adaptable spaces that respond to environmental conditions.

### Sustainability

Glazing maximizes natural light, reducing the reliance on artificial lighting and contributes to green building certifications by improving overall energy efficiency.

### Specialized Applications

From smart windows in residential homes to privacy glass in healthcare facilities, we offer glazing solutions tailored to meet specific project requirements.



## Lighting & Illumination

Light. Luminescence. Life

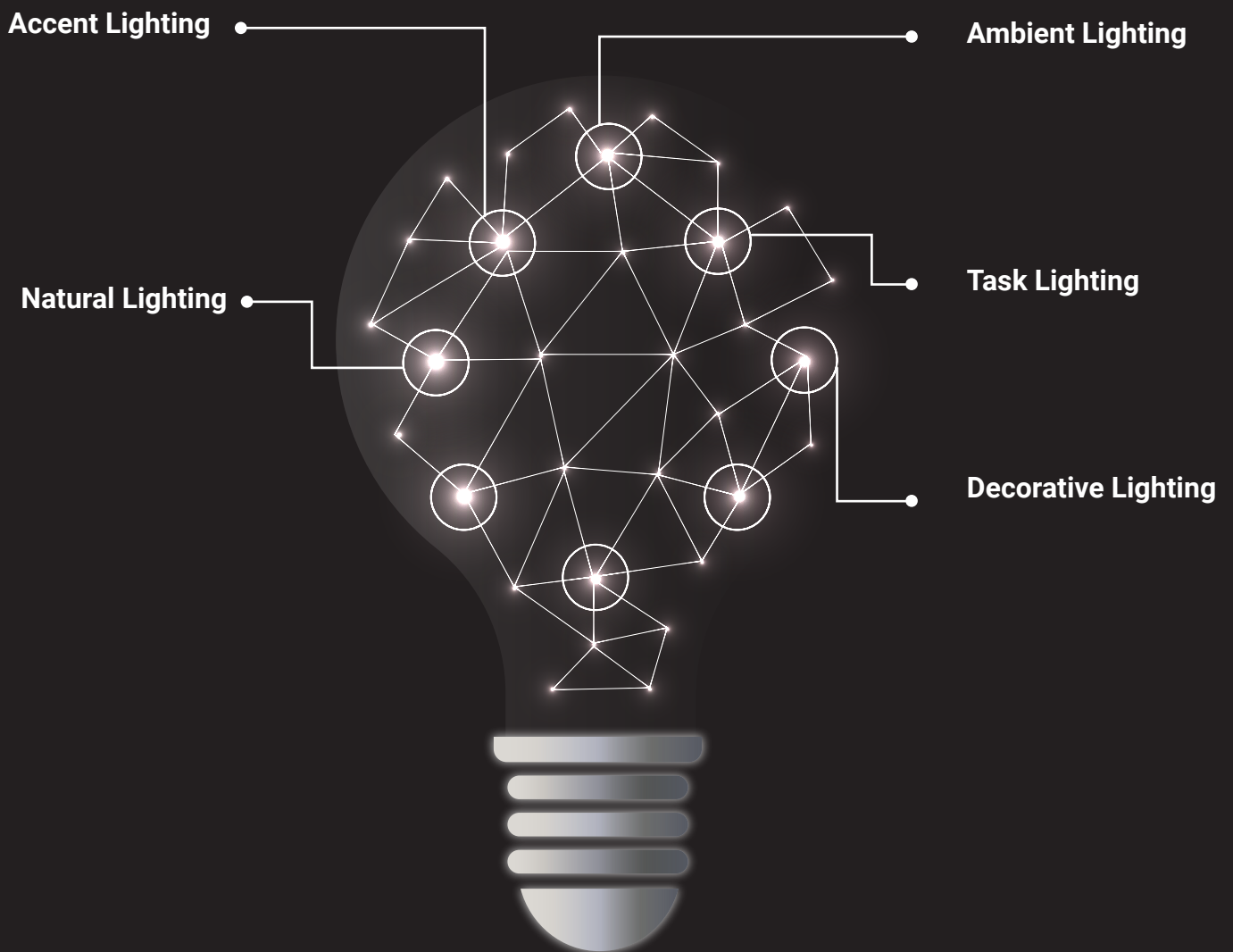
11

Illumination is more than just a practical need; it is an art form that transforms spaces. The right lighting has the power to enhance the beauty, functionality and safety of any environment. **At Illumination by Pacific Engineering & Suppliers**, we specialize in providing high-quality, innovative lighting solutions designed to elevate residential, commercial and industrial spaces. Whether you're designing a cozy home, a modern office, a dynamic retail environment or a luxurious hotel, our lighting solutions bring your vision to life by blending artistic aesthetics with technical functionality.

Our expert lighting designs not only serve a functional purpose but also help create the desired ambiance in every room, ensuring that your space feels as good as it looks. **At Pacific Engineering & Suppliers**, we believe lighting is an essential component of interior and exterior design and our goal is to offer the perfect balance between form, function and energy efficiency.

# Types of Illumination

We offer a wide range of lighting types to suit every need and style, from general ambient lighting to specialized task and accent lighting.





# Lighting Technologies

At **Illumination by Pacific Engineering & Suppliers**, we utilize the latest lighting technologies to ensure energy efficiency, longevity and design flexibility.

## Incandescent Lighting

Incandescent bulbs are traditional and provide a warm, inviting glow. While they are less energy-efficient than modern alternatives, their nostalgic appeal makes them ideal for certain residential and decorative settings.

## Fluorescent Lighting

Efficient and long-lasting, fluorescent lighting is often found in commercial and office spaces. These lamps offer bright, diffused illumination, making them a great option for work environments.

## LED Lighting

One of the most energy-efficient technologies available, LED lights offer versatility, durability and come in a range of colors. Used across homes, offices and large-scale industrial applications, LEDs are the future of sustainable lighting solutions.

## Halogen Lighting

Halogen lights are a more efficient variant of incandescent lighting. They produce bright white light and are commonly used for task and accent lighting, providing crisp, clear illumination.

## HID Lighting

High-Intensity Discharge (HID) lamps are ideal for outdoor and industrial spaces requiring high brightness and energy efficiency. These lamps are commonly used for streetlights, stadiums and large warehouses.

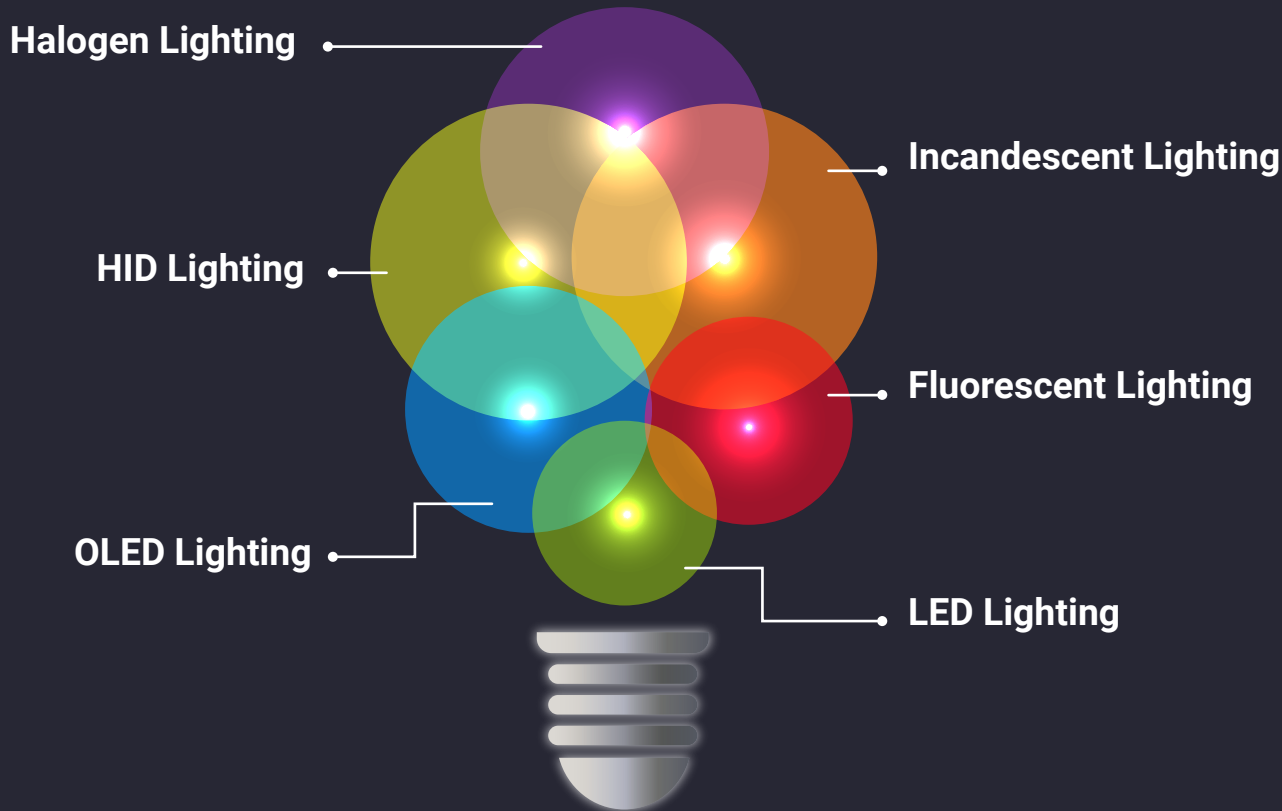
## OLED Lighting

Organic Light Emitting Diodes (OLEDs) provide flexibility in design and are capable of producing dynamic, adjustable lighting effects. They are ideal for modern, design-forward applications such as art installations and decorative lighting.

## Design and Planning

---

At **Illumination by Pacific Engineering & Suppliers**, we believe that lighting should be a harmonious blend of art and functionality. Our comprehensive lighting design services take into account the specific needs of each space while creating a visually compelling environment.



### Architectural Lighting Design

Our architectural lighting solutions highlight the structural features of buildings, accentuating form and creating mood while also providing necessary illumination. From modern offices to grandiose buildings, our designs enhance both aesthetics and functionality.

### Interior Lighting Design

Whether for a cozy home or a bustling office, we ensure that each room has the perfect combination of ambient, task and accent lighting to create a balanced, inviting atmosphere. Our designs aim to enhance the usability and mood of every interior space.

### Landscape Lighting Design

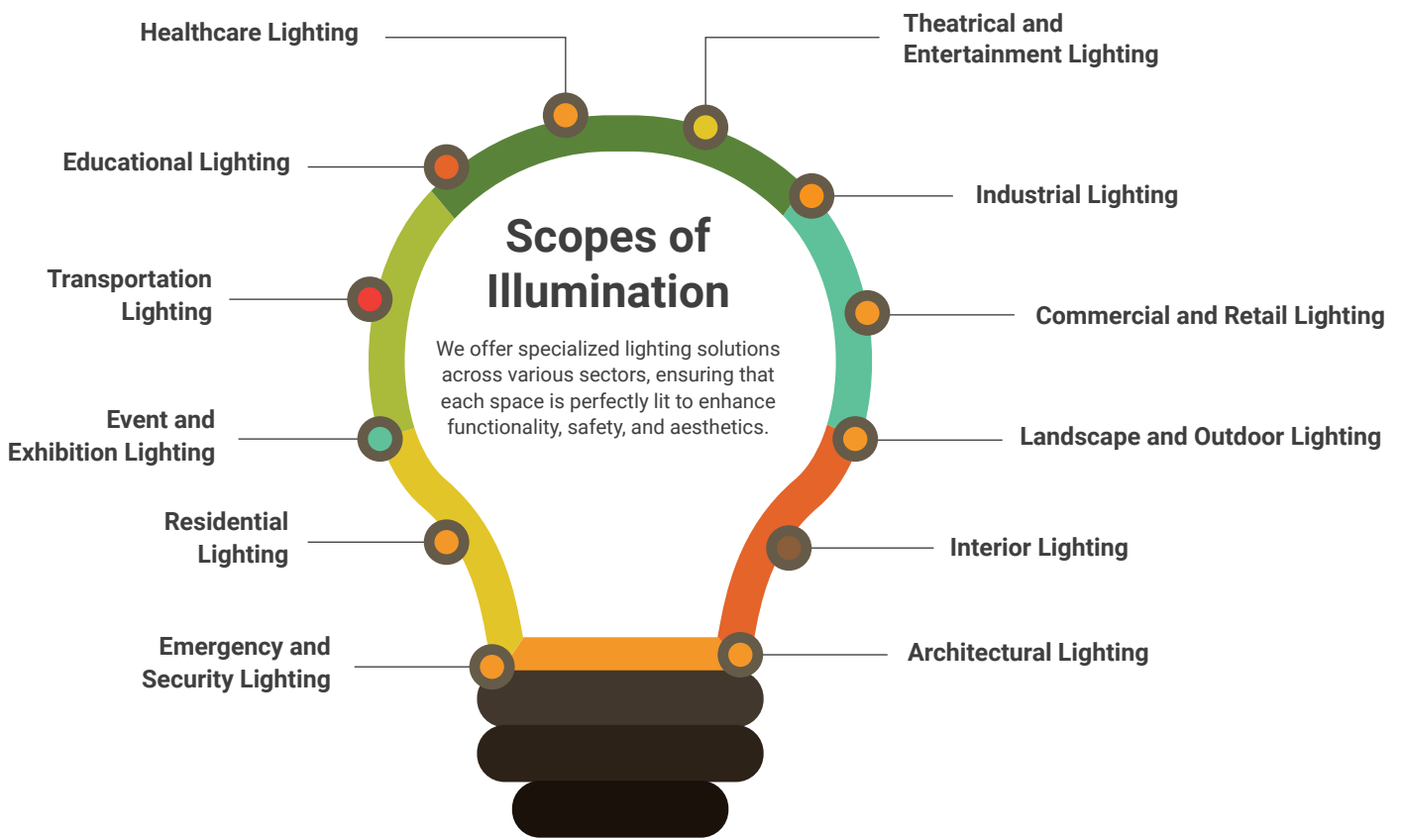
Outdoor lighting is an essential component in enhancing the safety and beauty of gardens, walkways and outdoor features. We design lighting that not only beautifies but also ensures visibility and security for residential and commercial outdoor spaces.

### Theatrical and Stage Lighting Design

Specialized lighting for events, theaters and concerts plays a key role in creating dramatic effects. Our creative solutions are designed to support performances and provide stunning lighting effects for any event.

### Exhibition Lighting Design

For exhibitions, trade shows and museums, we design lighting systems that illuminate displays optimally, creating a memorable experience for visitors and enhancing the visual appeal of exhibits.





# Fancy Lighting

Fancy lighting adds sophistication and elegance to any space. We offer a wide range of custom solutions, including

01

## Residential Spaces

Chandeliers, pendant lights and accent lights add elegance and style to any home.

02

## Hospitality and Commercial Spaces

Lighting for hotels, restaurants and bars that enhances ambiance and creates luxurious environments.

03

## Retail and Showrooms

High-end lighting solutions that highlight merchandise and create a premium shopping experience.

04

## Event and Entertainment Spaces

Specialized lighting for weddings, parties and performances that make events more visually striking.

05

## Outdoor and Landscape Lighting

Ornate garden lights and pathway lights that combine elegance with practicality.

06

## Specialty and Custom Lighting

Unique, custom-made lighting installations tailored to specific design needs, including interactive or art-based lighting.





## Solar Energy Solutions

Solar Synergy Simplified

12

Pacific Engineering and Suppliers is a leading renewable energy company committed to transforming the energy landscape through cutting-edge solar power solutions. Founded with a vision of contributing to sustainable energy practices, we have rapidly become a market leader, offering innovative and cost-effective solar technology to residential, commercial and industrial clients around the world. With a relentless focus on innovation and sustainability, we aim to drive the global transition to cleaner, greener energy sources.

## Services Offered



## Residential Solar Solutions



## Commercial Solar Solutions

- **Solar panel installations**  
Scalable solar energy solutions for businesses and institutions.
- **Solar carports and parking lot solutions**  
Solar-powered solutions for business parking lots.
- **Energy management systems**  
Tools to monitor and optimize energy usage in commercial buildings.
- **Financial analysis and ROI calculations**  
Helping businesses understand the financial benefits of solar energy.

## Industrial Solar Solutions

- **Large-scale solar farms and utility projects**  
Efficient and sustainable energy solutions for industrial facilities.
- **Off-grid solar systems**  
Providing energy independence for remote or underserved locations.
- **Solar-powered machinery**  
Solar technology for industrial equipment and machinery.
- **Maintenance and monitoring services**  
Ensuring consistent performance with regular check-ups.

## Solar Consulting and Design

- **Site assessments and feasibility studies**  
Detailed evaluations to assess the suitability of solar energy solutions.
- **Custom solar designs**  
Tailored designs and engineering to meet client specifications.
- **Permitting and regulatory compliance**  
Managing all necessary permits and ensuring compliance with regulations.
- **Financial modeling**  
Helping clients make informed decisions with detailed financial analyses.

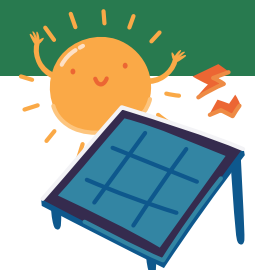


## Solar Maintenance and Support


- **Regular maintenance**  
Ensuring the longevity and efficiency of your solar system.
- **Performance monitoring**  
Keeping track of system performance for optimal energy output.
- **Warranty and repair services**  
Offering peace of mind with repair and warranty support.
- **Customer support**  
A dedicated team available for troubleshooting and assistance.

## Technology and Innovation

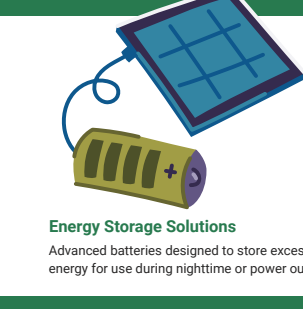
At Pacific Engineering and Suppliers, we invest heavily in research and development to stay at the cutting edge of solar technology. Our products and services include:



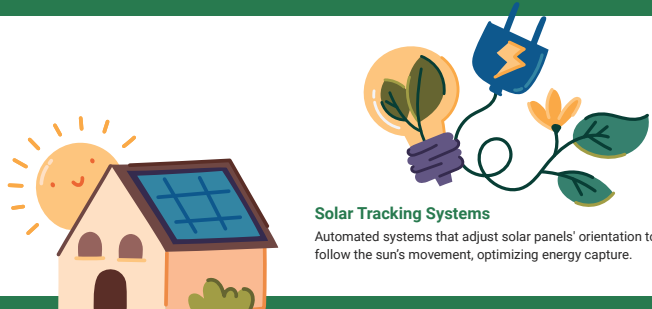
**High-Efficiency Solar Panels**  
The latest in photovoltaic technology to maximize energy output.



**Smart Inverters**  
Ensuring efficient conversion of solar power for seamless integration with existing power systems.



**Energy Storage Solutions**  
Advanced batteries designed to store excess solar energy for use during nighttime or power outages.



**Solar Tracking Systems**  
Automated systems that adjust solar panels' orientation to follow the sun's movement, optimizing energy capture.

# Sustainability Impact

---

Since our founding, Pacific Engineering and Suppliers has installed thousands of solar systems globally, significantly reducing CO2 emissions and promoting sustainability. Our work has

- **Reduced carbon emissions**

Through the adoption of solar energy, our systems have prevented tons of CO2 from being released into the atmosphere.

- **Provided clean energy**

We deliver solar power to homes and businesses, helping them reduce their reliance on non-renewable energy sources.

- **Created green jobs**

Our projects have generated employment opportunities, contributing to local economies and sustainable job creation.

**Furniture**

**13**

At **Pacific Engineering and Suppliers**, we are committed to designing and manufacturing high-quality, custom-made furniture that meets the diverse needs of our clients. Combining engineering precision with artistic craftsmanship, we create furniture that is functional, stylish and built to last. Whether you need bespoke pieces for residential, commercial or institutional spaces, our team delivers tailored solutions that reflect your vision.

With years of experience in engineering and design, we ensure every project adheres to the highest standards of quality, sustainability and innovation.

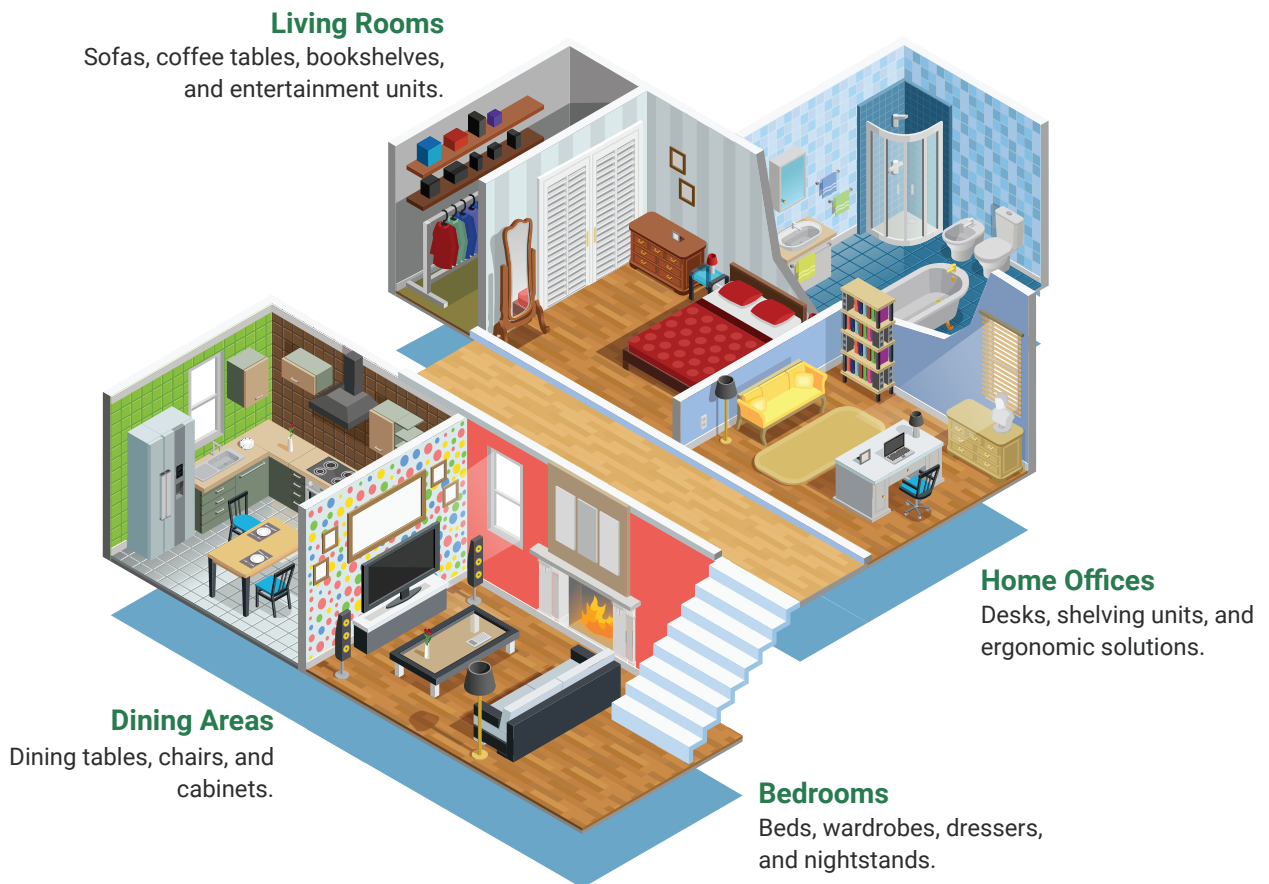


# Our Services

## Custom Furniture Manufacturing

- Fully personalized designs to match your style and requirements.
- Wide range of materials and finishes to choose from.

## Residential Furniture



## Commercial & Institutional Furniture



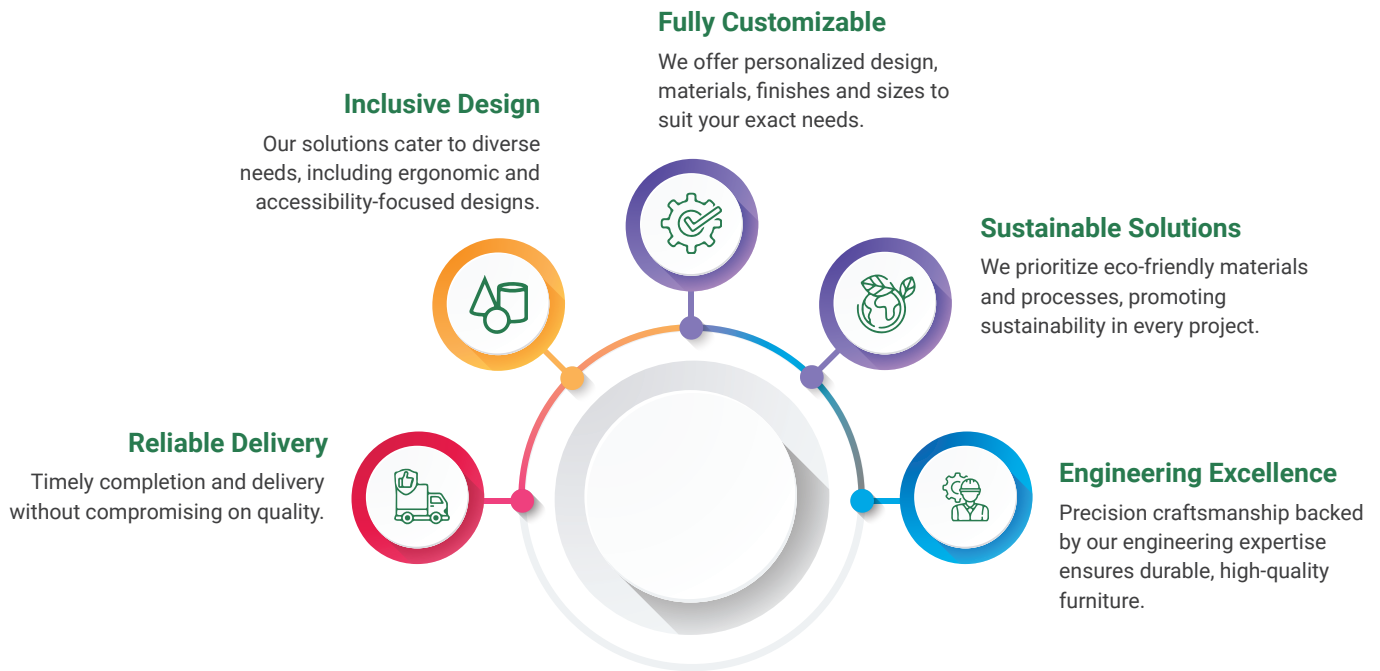
## Design Consultation

- One-on-one consultation to understand your vision.
- 3D modeling and visualization before production.

## Furniture Restoration & Retrofitting

- Restore or modify existing furniture to meet new functionality and aesthetics.

## Why Choose Us?



## Materials & Finishes

- **Wood**  
Oak, Board, Mahogany, Teak, Walnut, Maple and more.
- **Metal**  
Stainless steel, brass, wrought iron.
- **Upholstery**  
Leather, fabric and eco-friendly synthetics.
- **Finishes**  
Matte, gloss, distressed, natural or custom finishes.

## Industries We Serve

- **Residential**  
Homes and apartments.
- **Corporate**  
Offices and coworking spaces.
- **Hospitality**  
Hotels, restaurants and cafes.
- **Education**  
Schools, universities and libraries.
- **Retail**  
Showrooms, boutiques and stores.

# Our Process



## Mission Statement

At Pacific Engineering & Suppliers, our mission is to deliver innovative, high-quality engineering solutions that drive progress and excellence across civil, mechanical, electrical and industrial sectors. We are committed to meeting the diverse needs of our clients by providing exceptional services in construction, project management, industrial solutions and supply of engineering goods. With a focus on sustainability, efficiency and customer satisfaction, we aim to build lasting partnerships through integrity, professionalism and a relentless pursuit of excellence in every project we undertake.

## Vision

Our vision is to be a leading provider of integrated engineering solutions, renowned for transforming ideas into reality through innovative technology, sustainable practices and superior craftsmanship. We aspire to create a positive impact on the communities we serve by building infrastructure that enhances lives, fosters growth and supports the future of industries. Through continuous improvement, collaboration and a commitment to excellence, we aim to set new standards of quality and reliability in every project, positioning ourselves as the trusted partner of choice in the engineering sector.

# Core Values

---



## Excellence

We strive for excellence in every aspect of our business. From the planning phase to project execution and beyond, we consistently deliver top-tier craftsmanship, innovative engineering solutions and outstanding results. Our pursuit of excellence ensures that we exceed client expectations and set new benchmarks in the construction and engineering industries.



## Innovation

Innovation is at the heart of everything we do. We embrace cutting-edge technologies, forward-thinking solutions and continuous learning to address the unique challenges of our clients. By staying ahead of industry trends and adopting modern practices, we create value through innovation that drives progress and efficiency in our projects.



## Integrity

We operate with the highest level of integrity, ensuring transparency, honesty and ethical conduct in every decision and interaction. By adhering to strong moral principles and maintaining an unwavering commitment to accountability, we build trust and long-lasting relationships with our clients, partners and employees.



## Sustainability

We are deeply committed to sustainable development and environmentally responsible practices. Through careful planning and resource management, we integrate eco-friendly solutions in all aspects of our projects, from design to implementation. Our dedication to sustainability helps minimize environmental impact while contributing to the creation of a greener, more sustainable future.



## Safety

The safety and well-being of our employees, clients and partners are our top priority. We maintain strict safety protocols and practices to ensure that all projects are completed in a secure environment. Our goal is to foster a culture of health and safety, ensuring that everyone involved in our projects returns home safely every day.



## Client-Centric Approach

Our clients are the foundation of our success. We take a personalized approach, listening carefully to their needs and tailoring solutions to meet their specific requirements. By building strong partnerships based on trust, communication and collaboration, we ensure that each project is not just a task but a long-term relationship.



## Collaboration

We believe in the power of collaboration – within our teams, across departments, and with our clients and partners. By working together, we harness collective expertise, foster creative solutions and deliver optimal results. Our collaborative approach enables us to respond to challenges quickly and adapt to evolving needs while maintaining high standards of quality.





## Reliability

We pride ourselves on being a dependable partner that clients can trust to deliver projects on time, within budget and to the highest quality standards. Our reliability is reflected in our consistent track record of successful project completions, timely deliveries and meeting client expectations. We understand the importance of following through on our commitments.



## Quality

We are dedicated to maintaining the highest standards of quality in every service we provide. From the materials we use to the final touches on every project, we ensure that quality is never compromised. Our commitment to quality control guarantees that our clients receive exceptional, durable and safe solutions that stand the test of time.



## Accountability

We take full responsibility for the success of every project we undertake. Our team is accountable for every task, decision and outcome, ensuring that all aspects of the project are delivered as promised. We hold ourselves accountable to our clients, our team members and the communities we serve.



## Adaptability

In an ever-changing industry, we embrace adaptability. We are responsive to evolving client needs, technological advancements, and industry trends. Our ability to quickly adjust to new circumstances allows us to stay at the forefront of the engineering and construction sectors while maintaining the quality and efficiency our clients expect.



## Professionalism

We maintain a high level of professionalism in all interactions, whether with clients, partners or within our teams. Professionalism is the cornerstone of our business, ensuring that we represent our company with integrity, respect and a commitment to excellence in every endeavor.



## Community Impact

We are committed to making a positive impact in the communities where we operate. Our projects are designed not only to meet the needs of our clients but also to contribute to the well-being and development of local communities. We believe in creating infrastructure that fosters growth, improves lives and supports the social and economic development of the areas we serve.



## Efficiency

We optimize every aspect of our work to ensure that projects are completed efficiently and cost-effectively. By utilizing advanced project management techniques and innovative engineering solutions, we minimize waste, reduce costs and deliver projects on time while maximizing value for our clients.



## Respect

We foster a culture of respect within our company and in all our relationships. We value the diverse perspectives, talents and contributions of our employees, clients and partners. Respect is key to building strong, collaborative partnerships that lead to successful, long-term projects.



## Continuous Improvement

We are committed to the continuous improvement of our processes, products, and services. By learning from each project and embracing feedback, we strive to enhance our skills, knowledge and overall effectiveness. Our dedication to improvement ensures that we remain agile, competitive and aligned with the needs of our clients.



## Transparency

We believe in open and honest communication, both internally and externally. Our transparency ensures that all stakeholders are kept informed about project progress, timelines, budgets and any potential challenges. We believe that transparent processes build trust and contribute to the successful execution of projects.



## Value Creation

Our goal is to create lasting value for our clients, employees and stakeholders. Whether through high-quality infrastructure, sustainable solutions or efficient project execution, we are focused on generating value that contributes to long-term success and growth for all parties involved.



# Some of the Recently Completed Government Projects

No.	Name of Work	Nature of Work	Department	Tender ID	Project Worth in BDT
01	Upgradation of Diploma Engineering Course of Bangladesh Handloom Education and Training Institute at Narsingdi S.H Construction of Auditorium Building.	Building / Acoustic / Interior / Furniture	PWD	544337	11,00,00,000/- (Eleven Crore)
02	Up-gradation & Renovation of Joypurhat District hospital from 100 to 250 bed (sub-hed: 6 Storied service building)	Building	PWD	699680	5,00,00,000/- (Five Crore)
03	Construction of 08 nos. cement concrete roads, 02 nos. carpeting road, Reconstruction of 04 nos. carpeting road and 11 nos. tertiary drain under Ward No. 25 of Rajshahi City Corporation.	Rigid Pavement/ Flexible Pavement / Drain	GRD	579948	3,70,00,000/- (Three Crore Seventy Lac)
04	Construction of 6-Storied Academic Building with 6-Storied Foundation including Sanitary Water Supply & Internal Electrification Work at Adarsha High School under Kafrul Thana, Dhaka.	School Building	EED	348920	4,50,00,000/- (Four Crore Fifty Lac)
05	Vertical Extension of Rangpur Public Works Zone office 08 Eight stories foundation up to 2nd and 3rd Floor over existing 1st Floor (Civil Sanitary and Electrification Works)	Building	PWD	316689	3,17,00,000/- (Three Crore Seventeen Lac)
06	Painting of old poles of Dhaka Central Jail on the occasion of Mujib Centenary.	Painting	PWD		
07	Construction of Temporary Shed-1 to run the judicial works of the Tribunal for Retrofit/Restoration works as it is Risky to use of International Criminal Tribunal old High Court building chief prosecution office.	Steel Structure	PWD	488417	2,00,00,000/- (Two Crore)
08	Renovation and Re-Construction of Dismantling Drain Apron & Others Related Works at Sonali Rupali and Kajoli Building located at Eskaton Garden Government Officers Area.	Drain Repaire	PWD		
09	Renovation and Re-Construction of Dismantling Drain Apron and Inspection Pit at Karobi, Falgoni, and Mollica Building located at Eskaton Garden Government Officers Area.	Renovation	PWD		
10	Renovation and Re-Construction of Dismantling Drain Apron & Others Related Works at Shuli, Bornali, Kakoli and Chamali Building located at Eskaton Garden Government Officers Area.	Renovation	PWD		
11	Dismantling 07 nos Dustbin, Repair and Renovation of Boundary Wall, Sewerage Line, G.I. Pipe Line, Rain Water Down Pipe Line at Suruvi, Karobi, Falgoni and Nasimon Building located at Eskaton Garden Government Officers Area.	Renovation	PWD		
12	Making for Organized of Various National Important Days Conference and Seminar at Purta Bhaban Segunbagicha, e.g., Additional Chief Engineer and Honorable Chief Engineer for Agreement Signature of Annual Editing Action Discussion Meeting, Accepted Deal with Coronavirus Program, Celebration of 15 August Seminar at Purta Bhaban Regarding Building Inventory and Maintenance History, Conference and Seminar of Public Works Engineers, Meeting about Exchange of Opinion with Different BCS Public Works Officer Representative of BCSPWEA, Bapidiprokush & Public Works Employee Association, and Honorable Chief Engineer Purta Bhaban, Segunbagicha, Dhaka.	Event Management	PWD	511156	50,00,000/- ( Fifty Lac)

No.	Name of Work	Nature of Work	Department	Tender ID	Project Worth
13	Cleaning & Repair Drain Sewerage Line, Inspection Pit, and Other Ancillary Works for Isamoti, Madumoti, Dhanshiri, Gitali, and Mitali Building located at Eskaton Garden Government Officers Area.	Repair Work	PWD		
14	Construction of Toilet, Outside Weather Coat Paint, and Other Ancillary Repair Works at National Press Club, Topkhana, Dhaka.	Renovation and Re-construction	PWD		
15	Repair and Renovation Works at Justice Quarter, Dhaka.	Repair Work	PWD		
16	Renovation & modification work of Room no- 106, 209 & Teachers room and exterior premium acrylic imulsion painting work of outer surface of building no -1 with boundary wall & modification of toilet block, floor tiles work in building no- 3 front varandah and necessary other work at BCSIR School & College in the campus of BCSIR, Dhanmondi, Dhaka.	Repair Work	BCSIR		
17	Placement of cabinet, painting, replacement of sanitary fittings with related repair works of flat 8/C at 20 storied residential building constructed for honorable judges at Kakrail.	Renovaiton	BCSIR		
18	Hygienic wash with various civil sanitary repair works at baily damp and 48 new circuit house officers quarter of Dhaka.	Renovaiton	PWD		
19	Additional work including plastering and painting in various cabins of the 250-bed National Tuberculosis Hospital in Shyamli, Dhaka.	Repair and Renovaiton	PWD		
20	Repair Works of Road and Boundary Wall at the Residence of Rajshahi District and Session Judge.	Repair and Renovaiton	PWD		
21	Manufacturing & Supplying of Furniture at Faridpur High School, Mithapukur, Rangpur.	Furniture	EED		
22	Installation of electrical power socket at SSF Directors Building in Elenbari, Dhaka.	Repair and Renovaiton	PWD		
23	Manufacturing & Supplying of Furniture at Ajad Shalbari High School, Badargonj, Rangpur.(Nine Class Room)	Furniture	EED		
24	Manufacturing & Supplying of Furniture at Vogbotipur Uttorpara High School, Mithapukur, Rangpur.	Furniture	EED		
25	Renovation ( Civil & Electrical ) work of guest house in the campus of BCSIR , Dhanmondi , Dhaka.	Repair and Renovaiton	BCSIR		
26	Replacing old, worn out electrical wiring at different house of Azhar colony ,old central jail, Dhaka.	Repair and Renovaiton	PWD		
27	Re-construction of of surface drain, septic tank, water & gas supply line of Paikpara residential area of BCSIR , Dhanmondi , Dhaka.	Repair and Renovaiton	BCSIR		
28	Installation of 104 nos Deep Tube well with 6 no. Hand pump at Zajira Upazila (Naodoba, Palar Char, B.K.Nagar, Purba Naodoba union) of Shariatpur District Under the Project for Safe Water Supply Through Out The Country (PSWSC) FY 2021-22	Deep Tube Well	DPHE	595587	70,00,000/- (Seventy Lac)
29	Supply and installation of electrical equipment for External Electrical works of the Rayer Bazar Slaughter Places in Dhaka.	Sub-station/ Generator/ CCTV/ Electric Pole/ Street Light	PWD	569534	1,70,00,000/- (One Crore Seventy Lac)









The project involves construction of an auditorium building at Bangladesh Handloom Education and Training Institute in Narsingdi with a total value of taka 11 crore .





The project entails the up-gradation and renovation of Joypurhat District Hospital from 100 to 250 beds, including the construction of a 6-storied service building, valued at 5 crore taka.



## Some of the ongoing government works

No.	Name of Work	Nature of Work	Department	Tender ID	Project Worth
01	Construction of 06-Storeyed Building with 6-Storeyed Foundation, Rajshahi Regional Office and Laboratory of Soil Resource Development Institute (SRDI), including Civil, Sanitary, Electrification, Lift, Generator, Sub-Station, and Ancillary Works under the Project 'Construction and Capacity Building of SRDI (CCBS).	Building/ Interior/ Lift/ Sub-station/ Generator/ HVAC/ CCTV/ Electric Pole/ Street Light	PWD	569352	24,50,00,000/- (Twenty Four Crore Fifty Lac)
02	Construction of 05 (Five) Storeyed Office Building with 05 (Five) Storeyed Foundation, including Civil, Internal Sanitary & Water Supply, and Internal Electrification Works of Banglabandha Land Customs Station at Tetulia Upazila in the District of Panchagarh under the Project of Construction of Physical Infrastructure of Hili, Burimari, Banglabandha L.C Station.	Building	PWD	735063	9,50,00,000/- (Nine Crore Fifty Lac)
03	Construction of Sub-Station Building of Bangladesh Meteorological Department Headquarter (BMD), Agargaon, Dhaka.	Building	PWD	737282	50,00,000/- ( Fifty Lac)



The project involves constructing a 6-storied building for the Rajshahi Regional Office and Laboratory of SRDI. It includes civil, sanitary, electrification, lift, generator, sub-station and ancillary works under the 'CCBS' project, worth 24.5 crore taka.





The project includes constructing a 5-storied office building for Banglabandha Land Customs Station in Tetulia, Panchagarh. It covers civil, internal sanitary, water supply and electrification works under the Hili, Burimari, Banglabandha L.C Station project, worth 10 crore taka.





















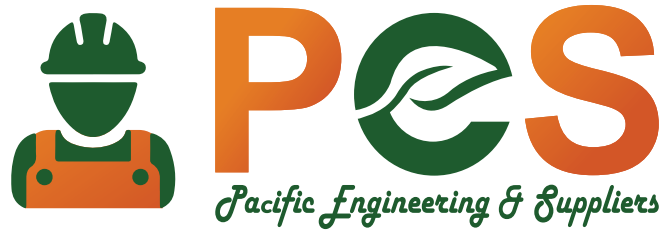
A 6-story academic building, including sanitary, water supply and internal electrification work, will be constructed at Adarsha High School, Kafrol Thana, Dhaka, for 4.40 crore BDT.



## Our Exclusive Government Clients

Client Name		Location
 Public Works Department		Bangladesh
 Education Engineering Department		Bangladesh
 Soil Resource Development Institute (SRDI)		Bangladesh
 Department of Public Health Engineering		Bangladesh
 Ministry of Industries		Bangladesh
 Ministry of Science and Technology		Bangladesh
 Ministry of Local Government		Bangladesh
 Rajshahi City Corporation		Rajshahi Bangladesh
 Ministry of Education		Bangladesh

Client Name		Location
 Bangladesh Customs		Bangladesh
 Ministry of Finance		Bangladesh
 Ministry of Agriculture, Bangladesh		Bangladesh
 ICT Division		Bangladesh
 Bangladesh Computer Council (BCC)		Bangladesh
 Skill Development for Mobile Game and Application Project, ICT Division		Bangladesh
 Local Government Engineering Department (LGED)		Bangladesh
 Bangladesh Council of Scientific and Industrial Research (BCSIR)		Bangladesh



## CTA



+8801326721723  
+8801711874937



contact@pesbd.com  
mtrh.bd@gmail.com



[www.pesbd.com](http://www.pesbd.com)



/ Pacific\_Adenium